

CATHEDRAL OF THE BLESSED SACRAMENT
3RD SUNDAY IN ORDINARY TIME
Twenty-fourth of January, Two Thousand & Twenty-one

✠ ACCEPTANCE INTO THE ORDER OF CATECHUMENS ✠

GREETING & CANDIDATES' FIRST ACCEPTANCE OF THE GOSPEL

Fr. O'Reilly solemnly asks if the candidates are ready to begin walking the way of the Gospel. The sponsors and all present are asked if they stand ready to assist the candidates as they strive to know and follow Christ. All respond: We are.

SIGNING OF THE CANDIDATES WITH THE CROSS

INVITATION TO THE CELEBRATION OF THE WORD OF GOD

Gloria from Heritage Mass

Glo-ry to God in the high - est, and on earth peace to peo - ple of good
will. We praise you, we bless you, we a - dore you, we glo - ri - fy
you, we give you thanks for your great glo - ry, Lord God,
heav'n - ly King, O God, al-might-y Fa - ther. Lord Je - sus Christ,
On - ly Be - got - ten Son, Lord God, Lamb of God, Son of the
Fa - ther, you take a - way the sins of the world, have mer - cy on
us; you take a - way the sins of the world, re - ceive our prayer;
you are seat - ed at the right hand of the Fa - ther, have mer - cy on us.
For you a - lone are the Ho - ly One, you a - lone are the Lord,
you a - lone are the Most High, Je - sus Christ, with the Ho - ly
Spir - it, in the glo - ry of God the Fa - ther. A - men.

✠ LITURGY OF THE WORD ✠

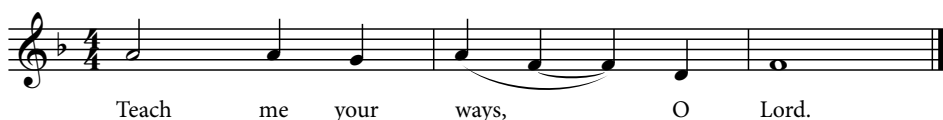
READING I

Jonah 3:1-5, 10

The people of Nineveh believed God.

RESPONSORIAL PSALM

Psalm 25:4-5, 6-7, 8-9



Text © 1969, 1981, 1997, ICEL. All rights reserved. Used with permission.

Music: Owen Alstott, © 1977, 1990, OCP. All rights reserved.

READING II

1 Corinthians 7:29-31

This world is passing away.

GOSPEL ACCLAMATION & VERSE

John 1:41, 17b



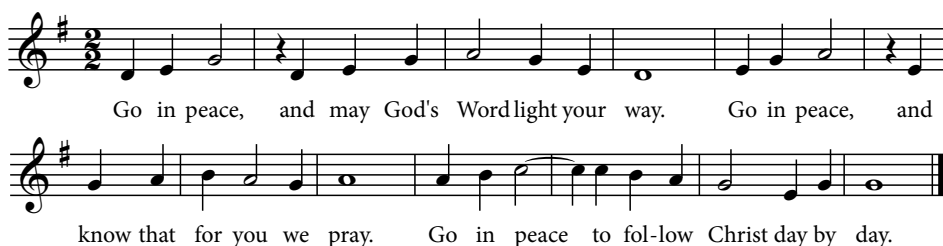
Music: Owen Alstott, © 1977, 1990, OCP. All rights reserved.

GOSPEL PROCLAMATION

Mark 1:14-20

The kingdom of God is at hand.

DISMISSAL OF THE CATECHUMENS



Text and music: John Schiavone, b. 1947, © 1997, John Schiavone. Published by OCP. All rights reserved.

PROFESSION OF FAITH

I believe in one God, the Father almighty, maker of heaven and earth, of all things visible and invisible. I believe in one Lord Jesus Christ, the Only Begotten Son of God, born of the Father before all ages. God from God, Light from Light, true God from true God, begotten, not made, consubstantial with the Father; through him all things were made. For us men and for our salvation he came down from heaven,

[bow] *and by the Holy Spirit was incarnate of the Virgin Mary, and became man.*

For our sake he was crucified under Pontius Pilate, he suffered death and was buried, and rose again on the third day in accordance with the Scriptures. He ascended into heaven and is seated at the right hand of the Father. He will come again in glory to judge the living and the dead and his kingdom will have no end. I believe in the Holy Spirit, the Lord, the giver of life, who proceeds from the Father and the Son, who with the Father and the Son is adored and glorified, who has spoken through the prophets. I believe in one, holy, catholic and apostolic Church. I confess one baptism for the forgiveness of sins and I look forward to the resurrection of the dead and the life of the world to come. Amen.

THE UNIVERSAL PRAYER



✠ LITURGY OF THE EUCHARIST ✠

SANCTUS

A Community Mass



Text: ICEL, © 2010

Music: *A Community Mass*, Richard Proulx, © 1971, 1977, 2006, 2010, GIA Publications, Inc.

MYSTERIUM FIDEI

A Community Mass



Text: ICEL, © 2010

Music: *A Community Mass*, Richard Proulx, © 1985, 2010, GIA Publications, Inc.

GREAT AMEN

A Community Mass

Proulx



Music: *A Community Mass*, Richard Proulx, © 1971, 1977, GIA Publications, Inc.

FRACTION LITANY

A Community Mass

Lamb of God you take a - way the sins of the
world, have mer - cy on us. Lamb of God you
take a - way the sins of the world: grant us peace.

The musical notation is in G major (one flat) and 3/4 time. It consists of three staves. The first staff has a key signature change from one flat to no flats. The second staff has a repeat sign. The third staff ends with a double bar line.

Music: *A Community Mass*, Richard Proulx, © 1971, 1977, GIA Publications, Inc.

RECESSIONAL HYMN

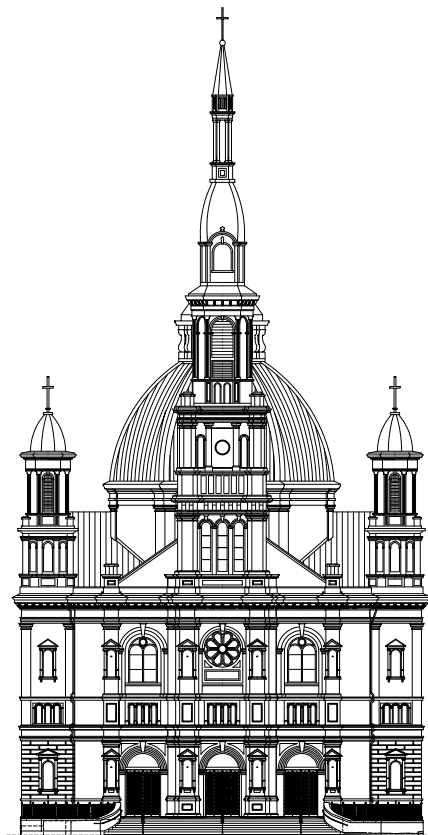
Joyful, Joyful, We Adore Thee

Joy - ful, joy - ful, we a - dore thee, God of glo - ry,
All thy works with joy sur - round thee, Earth and heav'n re -
Mor - tals, join the might - y cho - rus Which the morn - ing
Lord of love; Hearts un - fold like flow'rs be - fore thee,
flect thy rays, Stars and an - gels sing a - round thee,
stars be - gan; Love di - vine is reign - ing o'er us,
Op'n - ing to the sun a - bove. Melt the clouds of
Cen - ter of un - bro - ken praise; Field and for - est,
Bind - ing all with - in its span. Ev - er sing - ing,
sin and sad - ness; Drive the dark of doubt a - way;
vale and moun - tain, Flow - 'ry mead - ow, flash - ing sea,
march we on - ward, Vic - tors in the midst of strife;
Giv - er of im - mor - tal glad - ness, Fill us with the
Chant - ing bird and flow - ing foun - tain, Call us to re -
Joy - ful mu - sic leads us sun - ward, In the tri - umph
light of day.
joice in thee.
song of life.

The musical notation is in G major (one sharp) and 4/4 time. It consists of eight staves. The first staff has a key signature change from one flat to one sharp. The eighth staff ends with a double bar line.

Text: 87 87 D; Henry van Dyke, 1852-1933, alt.

Music: HYMN TO JOY; Ludwig van Beethoven, 1770-1827; adpt. by Edward Hodges, 1796-1867.



Cathedral Music Ministry

Mr. Rexphil Rallanka, *Director of Music, Organist*

Mr. Ruben Arocan, Mr. Salvatore Atti,
Mr. Jonathan Hansen, Mrs. Rachel Songer, *Cantors*