

CATHEDRAL OF THE BLESSED SACRAMENT  
25<sup>TH</sup> SUNDAY IN ORDINARY TIME  
Twentieth of September, Two Thousand and Twenty

# PRELUDE

Christ, He Is My Life, BWV 1112

J.S. Bach (1685-1750)

## ✠ INTRODUCTORY RITES ✠

## PROCESSIONAL HYMN

## Lord of All Hopefulness

SLANE

1. Lord	of	all	hope - ful - ness,	Lord	of	all	joy,
2. Lord	of	all	ea - ger - ness,	Lord	of	all	faith,
3. Lord	of	all	kind - li - ness,	Lord	of	all	grace,
4. Lord	of	all	gen - tle - ness,	Lord	of	all	calm,

Whose trust, e - ver child - like, no cares can de - stroy,  
Whose strong hands were skilled at the plane and the lathe,  
Your hands swift to wel - come, your arms to em - brace,  
Whose voice is con - tent - ment, whose pres - ence is balm,

Be	there	at	our	wak - ing,	and	give	us,	we	pray,
Be	there	at	our	la - bors,	and	give	us,	we	pray,
Be	there	at	our	hom - ing,	and	give	us,	we	pray,
Be	there	at	our	sleep - ing,	and	give	us,	we	pray,

Your	bliss	in	our	hearts,	Lord,	at	the	break	of	the	day.
Your	strength	in	our	hearts,	Lord,	at	the	noon	of	the	day.
Your	love	in	our	hearts,	Lord,	at	the	eve	of	the	day.
Your	peace	in	our	hearts,	Lord,	at	the	end	of	the	day.

## THE PENITENTIAL ACT

Exercise 1: A treble clef is shown on the left. The staff contains a sequence of eighth notes: C4, D4, E4, F4, G4, A4, B4, C5, D5, E5, F5, G5, A5, B5, C6, D6, E6, F6, G6, A6, B6, C7, D7, E7, F7, G7, A7, B7, C8, D8, E8, F8, G8, A8, B8, C9, D9, E9, F9, G9, A9, B9, C10, D10, E10, F10, G10, A10, B10, C11, D11, E11, F11, G11, A11, B11, C12, D12, E12, F12, G12, A12, B12, C13, D13, E13, F13, G13, A13, B13, C14, D14, E14, F14, G14, A14, B14, C15, D15, E15, F15, G15, A15, B15, C16, D16, E16, F16, G16, A16, B16, C17, D17, E17, F17, G17, A17, B17, C18, D18, E18, F18, G18, A18, B18, C19, D19, E19, F19, G19, A19, B19, C20, D20, E20, F20, G20, A20, B20, C21, D21, E21, F21, G21, A21, B21, C22, D22, E22, F22, G22, A22, B22, C23, D23, E23, F23, G23, A23, B23, C24, D24, E24, F24, G24, A24, B24, C25, D25, E25, F25, G25, A25, B25, C26, D26, E26, F26, G26, A26, B26, C27, D27, E27, F27, G27, A27, B27, C28, D28, E28, F28, G28, A28, B28, C29, D29, E29, F29, G29, A29, B29, C30, D30, E30, F30, G30, A30, B30, C31, D31, E31, F31, G31, A31, B31, C32, D32, E32, F32, G32, A32, B32, C33, D33, E33, F33, G33, A33, B33, C34, D34, E34, F34, G34, A34, B34, C35, D35, E35, F35, G35, A35, B35, C36, D36, E36, F36, G36, A36, B36, C37, D37, E37, F37, G37, A37, B37, C38, D38, E38, F38, G38, A38, B38, C39, D39, E39, F39, G39, A39, B39, C40, D40, E40, F40, G40, A40, B40, C41, D41, E41, F41, G41, A41, B41, C42, D42, E42, F42, G42, A42, B42, C43, D43, E43, F43, G43, A43, B43, C44, D44, E44, F44, G44, A44, B44, C45, D45, E45, F45, G45, A45, B45, C46, D46, E46, F46, G46, A46, B46, C47, D47, E47, F47, G47, A47, B47, C48, D48, E48, F48, G48, A48, B48, C49, D49, E49, F49, G49, A49, B49, C50, D50, E50, F50, G50, A50, B50, C51, D51, E51, F51, G51, A51, B51, C52, D52, E52, F52, G52, A52, B52, C53, D53, E53, F53, G53, A53, B53, C54, D54, E54, F54, G54, A54, B54, C55, D55, E55, F55, G55, A55, B55, C56, D56, E56, F56, G56, A56, B56, C57, D57, E57, F57, G57, A57, B57, C58, D58, E58, F58, G58, A58, B58, C59, D59, E59, F59, G59, A59, B59, C60, D60, E60, F60, G60, A60, B60, C61, D61, E61, F61, G61, A61, B61, C62, D62, E62, F62, G62, A62, B62, C63, D63, E63, F63, G63, A63, B63, C64, D64, E64, F64, G64, A64, B64, C65, D65, E65, F65, G65, A65, B65, C66, D66, E66, F66, G66, A66, B66, C67, D67, E67, F67, G67, A67, B67, C68, D68, E68, F68, G68, A68, B68, C69, D69, E69, F69, G69, A69, B69, C70, D70, E70, F70, G70, A70, B70, C71, D71, E71, F71, G71, A71, B71, C72, D72, E72, F72, G72, A72, B72, C73, D73, E73, F73, G73, A73, B73, C74, D74, E74, F74, G74, A74, B74, C75, D75, E75, F75, G75, A75, B75, C76, D76, E76, F76, G76, A76, B76, C77, D77, E77, F77, G77, A77, B77, C78, D78, E78, F78, G78, A78, B78, C79, D79, E79, F79, G79, A79, B79, C80, D80, E80, F80, G80, A80, B80, C81, D81, E81, F81, G81, A81, B81, C82, D82, E82, F82, G82, A82, B82, C83, D83, E83, F83, G83, A83, B83, C84, D84, E84, F84, G84, A84, B84, C85, D85, E85, F85, G85, A85, B85, C86, D86, E86, F86, G86, A86, B86, C87, D87, E87, F87, G87, A87, B87, C88, D88, E88, F88, G88, A88, B88, C89, D89, E89, F89, G89, A89, B89, C90, D90, E90, F90, G90, A90, B90, C91, D91, E91, F91, G91, A91, B91, C92, D92, E92, F92, G92, A92, B92, C93, D93, E93, F93, G93, A93, B93, C94, D94, E94, F94, G94, A94, B94, C95, D95, E95, F95, G95, A95, B95, C96, D96, E96, F96, G96, A96, B96, C97, D97, E97, F97, G97, A97, B97, C98, D98, E98, F98, G98, A98, B98, C99, D99, E99, F99, G99, A99, B99, C100, D100, E100, F100, G100, A100, B100, C101, D101, E101, F101, G101, A101, B101, C102, D102, E102, F102, G102, A102, B102, C103, D103, E103, F103, G103, A103, B103, C104, D104, E104, F104, G104, A104, B104, C105, D105, E105, F105, G105, A105, B105, C106, D106, E106, F106, G106, A106, B106, C107, D107, E107, F107, G107, A107, B107, C108, D108, E108, F108, G108, A108, B108, C109, D109, E109, F109, G109, A109, B109, C110, D110, E110, F110, G110, A110, B110, C111, D111, E111, F111, G111, A111, B111, C112, D112, E112, F112, G112, A112, B112, C113, D113, E113, F113, G113, A113, B113, C114, D114, E114, F114, G114, A114, B114, C115, D115, E115, F115, G115, A115, B115, C116, D116, E116, F116, G116, A116, B116, C117, D117, E117, F117, G117, A117, B117, C118, D118, E118, F118, G118, A118, B118, C119, D119, E119, F119, G119, A119, B119, C120, D120, E120, F120, G120, A120, B120, C121, D121, E121, F121, G121, A121, B121, C122, D122, E122, F122, G122, A122, B122, C123, D123, E123, F123, G123, A123, B123, C124, D124, E124, F124, G124, A124, B124, C125, D125, E125, F125, G125, A125, B125, C126, D126, E126, F126, G126, A126, B126, C127, D127, E127, F127, G127, A127, B127, C128, D128, E128, F128, G128, A128, B128, C129, D129, E129, F129, G129, A129, B129, C130, D130, E130, F130, G130, A130, B130, C131, D131, E131, F131, G131, A131, B131, C132, D132, E132, F132, G132, A132, B132, C133, D133, E133, F133, G133, A133, B133, C134, D134, E134, F134, G134, A134, B134, C135, D135, E135, F135, G135, A135, B135, C136, D136, E136, F136, G136, A136, B136, C137, D137, E137, F137, G137, A137, B137, C138, D138, E138, F138, G138, A138, B138, C139, D139, E139, F139, G139,

*V. Have mer-cy on us, O Lord. R. For we have sinned a - gainst you.*

The first line of musical notation is on a single staff with a treble clef. It contains two measures of music. The first measure has a key signature of one flat (B-flat) and a 4/4 time signature. The notes are: G4 (quarter), A4 (quarter), Bb4 (quarter), A4 (quarter), G4 (quarter), F4 (quarter), E4 (quarter), and D4 (half). The second measure has a repeat sign at the beginning and contains the notes: D4 (half), C4 (half), Bb3 (quarter), A3 (quarter), G3 (quarter), F3 (quarter), E3 (quarter), and D3 (half). Below the staff, the lyrics are: "The Old Churchyard".

*V. Show us, O Lord, your mer-cy.*     *R. And grant us your sal-va-tion.*

The first line of musical notation is on a single staff with a treble clef. It begins with a key signature of one sharp (F#) and a common time signature (C). The melody consists of the following notes: a quarter note on G4, followed by a half note on A4, then a quarter note on B4, a quarter note on C5, a quarter note on B4, a quarter note on A4, and a quarter note on G4. This is followed by a double bar line. After the double bar line, there is a quarter note on G4, a quarter note on A4, and a quarter note on B4. The line ends with a final double bar line.

*V. May almighty God have mercy on us, forgive us our sins,*

*and bring us to ever - last - ing life.*      **R. A - men.**

## KYRIE ELEISON

*Missa Simplex*

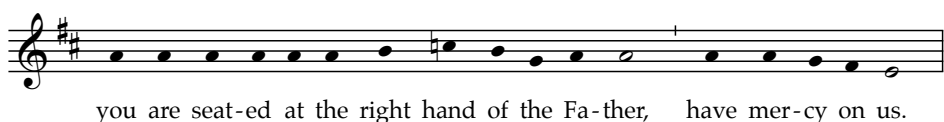
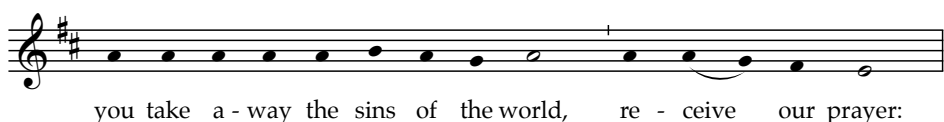
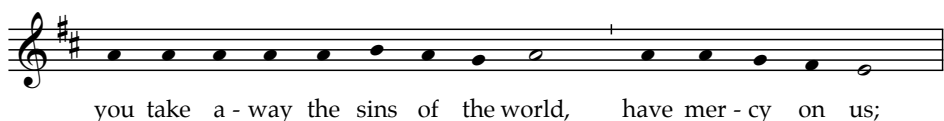
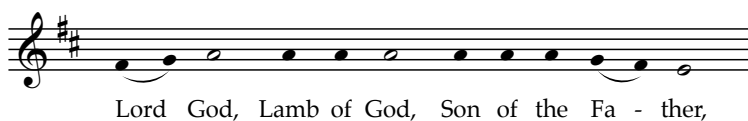
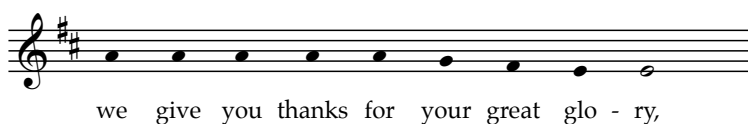
Richard Proulx, arr. O'Connor, OP



## GLORIA

*Missa Simplex*

Richard Proulx



## ✠ LITURGY OF THE WORD ✠

### READING I

Isaiah 55:6-9

*My thoughts are not your thoughts.*

### RESPONSORIAL PSALM

Psalm 145:2-3, 8-9, 17-18



### READING II

Philippians 1:20c-24, 27a

*For me to live is Christ.*

### GOSPEL ACCLAMATION & VERSE

cf. Acts 16:14b



### GOSPEL PROCLAMATION

Matthew 20:1-16a

*Are you envious because I am generous?*

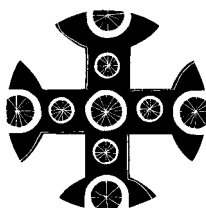
### PROFESSION OF FAITH

I believe in one God, the Father almighty, maker of heaven and earth, of all things visible and invisible. I believe in one Lord Jesus Christ, the Only Begotten Son of God, born of the Father before all ages. God from God, Light from Light, true God from true God, begotten, not made, consubstantial with the Father; through him all things were made. For us men and for our salvation he came down from heaven,

[bow] *and by the Holy Spirit was incarnate of the Virgin Mary, and became man.*

For our sake he was crucified under Pontius Pilate, he suffered death and was buried, and rose again on the third day in accordance with the Scriptures. He ascended into heaven and is seated at the right hand of the Father. He will come again in glory to judge the living and the dead and his kingdom will have no end. I believe in the Holy Spirit, the Lord, the giver of life, who proceeds from the Father and the Son, who with the Father and the Son is adored and glorified, who has spoken through the prophets. I believe in one, holy, catholic and apostolic Church. I confess one baptism for the forgiveness of sins and I look forward to the resurrection of the dead and the life of the world to come. Amen.

### THE UNIVERSAL PRAYER



✠ LITURGY OF THE EUCHARIST ✠

## PREPARATION OF THE GIFTS

## Psalm 23

Owen Alstott

The Lord is my shep-herd; there is noth-ing I shall want.

## SANCTUS

## Mass for the City

Richard Proulx

Heav - en and earth are full of your glo - ry.

Ho - san - na, ho - san - na, ho - san - na in the high - est.

Ho - san - na, ho - san - na, ho san - na in the high - est.

Ho - san - na, ho - san - na, ho - san - na in the high - est.

# MYSTERIUM FIDEI

## Mass for the City

Richard Proulx

We pro - claim your Death, O Lord, and pro - fess your

Res - ur - rec - tion un - til you come a - gain.

## GREAT AMEN

## Mass for the City

Richard Proulx

A - men, a - men, a - men.

# ✠ COMMUNION RITE ✠

## THE LORD'S PRAYER

## SIGN OF PEACE

## FRACTION LITANY

Richard Proulx

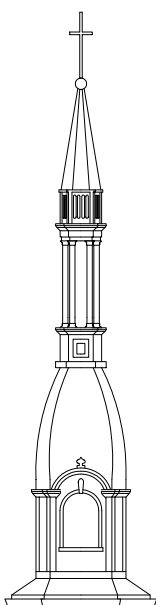
Lamb of God, you take a-way the sins of the world: have  
mer - cy on us. Lamb of God, you take a-way the  
sins of the world: grant us peace, grant us peace.

## COMMUNION PROCESSION

Take and Eat

Michael Joncas

Take and eat; take and eat: this is my bod - y  
giv - en up for you. Take and drink; take and drink:  
this is my blood giv - en up for you.



# ✠ CONCLUDING RITES ✠

## RECESSIONAL HYMN

Now Thank We All Our God

NUN DANKET

1. Now thank we all our God With hearts and hands and  
 2. O may this gra - cious God Through all our life be  
 3. All praise and thanks to God The Fa - ther now be  
 voic - es, Who won - drous things has done, In  
 near us, With ev - er joy - ful hearts And  
 giv - en, The Son, and Spir - it blest, Who  
 whom his world re - joic - es; Who, from our moth - ers'  
 bless - ed peace to cheer us; Pre - serve us in his  
 reigns in high - est heav - en, E - ter - nal, Tri - une  
 arms, Hath blest us on our way With  
 grace, And guide us in dis - tress, And  
 God, Whom earth and heav'n a - dore; For  
 count-less gifts of love, And still is ours to - day.  
 free us from all sin, Till heav - en we pos - sess.  
 thus it was, is now, And shall be ev - er - more.

## POSTLUDE

Now Thank We All Our God

Georg Friedrich Kaufmann (1679-1735)

### *Cathedral Music Ministry*

Mr. Rexphil Rallanka, *Director of Music, Organist*

Mr. Ruben Arocan, Mr. Salvatore Atti,  
 Mr. Jonathan Hansen, Mrs. Rachel Songer, *Cantors*